

## MAP 21

### Transportation Asset Inventory

“MAP-21 establishes new performance management mandates for State Departments of Transportation, Metropolitan Planning Organizations (MPOs), and public transportation operators. Many of these new requirements can be accomplished by incorporating performance targets and measurement procedures within their existing planning and reporting processes.

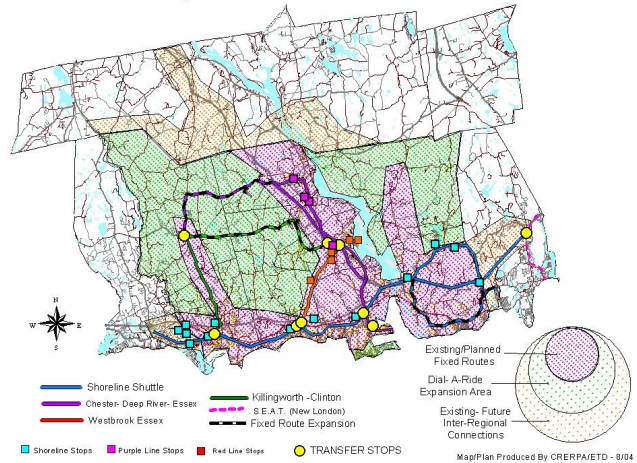
Under the new law, the operations of local transit providers – as critical components of a region’s surface transportation system – will be heavily incorporated into regional planning and the development of regional transportation performance management goals.

Performance measures are data about the use, condition, and impact of the transportation system. These measures are best thought of as indicators – data that is publicly reported for illustrative purposes or to demonstrate progress made toward established targets.” (CMAP)



Contact Richard Grant—Project Manager  
(860) 581-8554 for more information

Transit Fixed Route System and Expansion Areas



### List of Transportation Assets

- Major Roads—CTDOT Data
- Minor Roads –Pavement Conditions and Design
- Bridges and Culverts—Age and Structure
- Transit Capitol
- Transit Routes and Bus Stops
- Dams
- Rail Stations
- Bike Routes
- Sidewalks
- Signalization
- Intersections